



# GM Cars Trunk Spatter Paint Pro-Quality Quart Instructions



### Equipment Requirements:

Use a pressure pot system with a conventional or HVLP spray gun with a fluid tip/needle of .080-.090 or 2.0-2.4 mm.  
DO NOT use airless spray equipment to apply.



### Surface Prep:

Standard Instructions:

1. Wash application area thoroughly with soap & water to remove contaminants that solvent based cleaners cannot remove effectively.
2. Clean application area with wax & grease remover.
3. Completely sand surface with 180 grit sandpaper or equivalent.
4. Repeat step 2.
5. Apply Product.

Bare Metal Instructions:

1. If metal surface is badly pitted or rusted, remove rust and treat with a quality metal cleaner or conditioner. Treat bare metal with an etching primer immediately after cleaning.
2. Prime application
3. Completely sand surface with 180 grit sandpaper or equivalent.
4. Clean application area with wax & grease remover.
5. Apply Product.



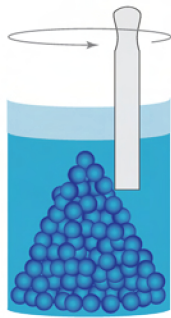
### Mixing:

Stir product only.

**DO NOT** shake, tint, add water or solvent based thinners and reducers

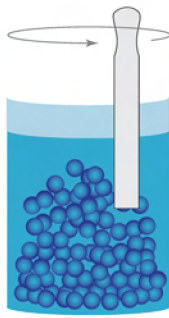
#### STEP 1

Begin stirring gently at the top and around the sides of the can. Do not stir in the middle at this stage of preparation.



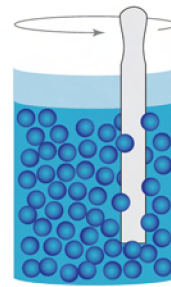
#### STEP 2

Stirring gently around the sides, gradually insert stir stick farther into the can and toward the middle. Do not push stir stick through the mass of color flecks.



#### STEP 3

Be sure to stir gently and work your way down the sides and middle of the can. By the time you reach the bottom, the Zolatone should be completely mixed.



### Applying:

Apply in a 2 step process by applying one sheer coat followed by a pattern coat to achieve desired texture.

Sheer Coat Application:

1. Set the pot air pressure to 10 psi
2. Open fluid valve completely.
3. Set air pressure to 50-60 psi at the gun.
4. Apply first coat 8-12 inches from surface.
5. Spray until hiding is achieved.

Pattern Coat Application:

1. Set air pressure to 25-30 psi at the gun.
2. Apply pattern coat 12 inches from surface.
3. Spray until desired texture is achieved.



### Dry Times:

Flash Time	None between coats
Tack Free	2 Hours @ 70°F
Tape Free	16-24 Hours
Air Dry	16-24 Hours
Force Dry	140°F for 45 minutes. (30 minute purge time)
To Clearcoat	16-24 Hours or after cooling
Full Cure	5-7 Days